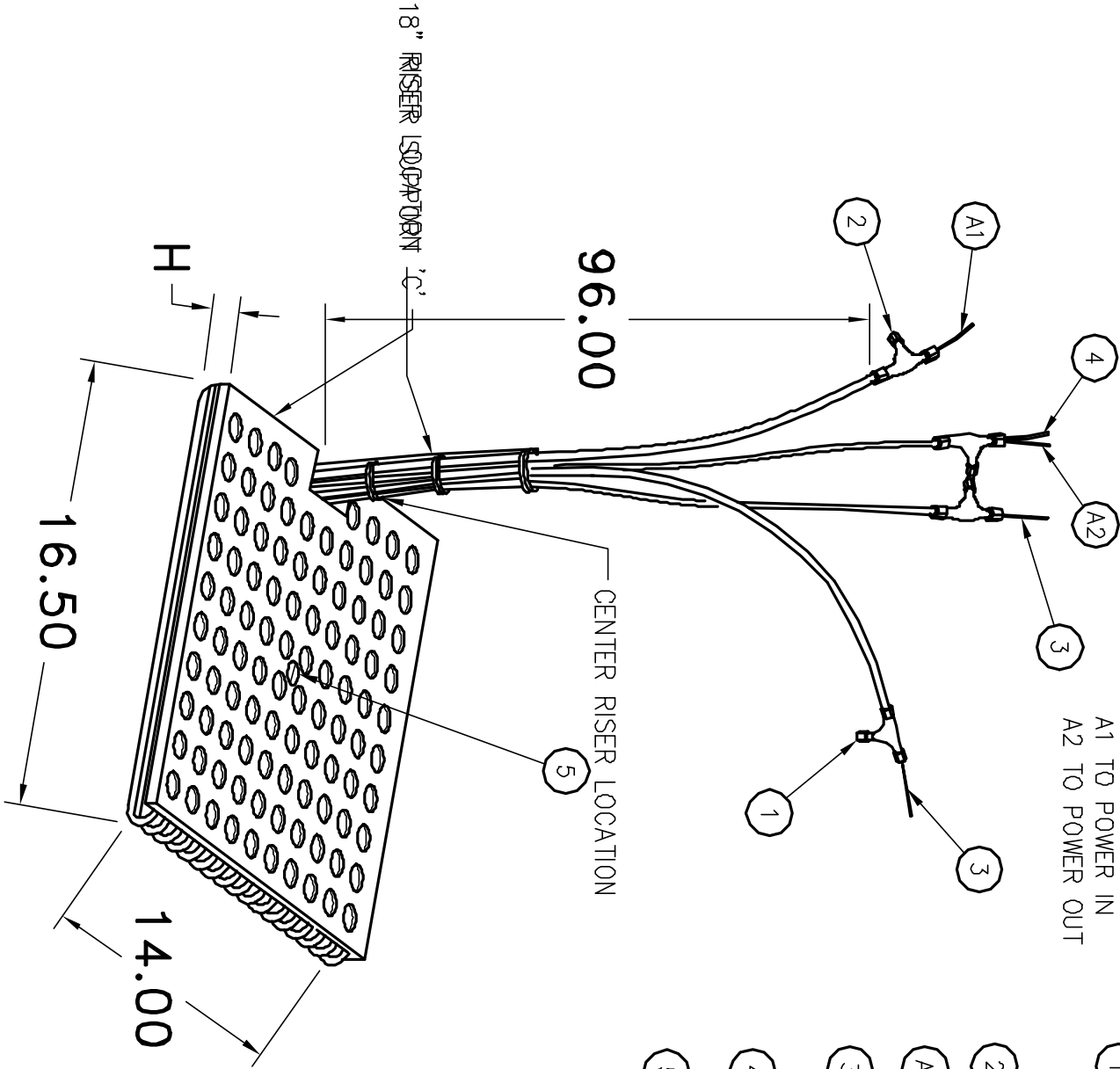


SINGLE PHASE WIRING
A1 TO POWER IN
A2 TO POWER OUT

- 1 PURGE IN FROM SUPPLY TO HEATER
PRESSURE: 5-10 PSI (.34-.69 BARS)
RATE: 2-3 SCFH (56.6-85.0 LPH)
- 2 PURGE OUT FROM HEATER TO EXHAUST
- A1 A2 HEATER POWER (BLACK LEAD)
- 3 TCO'S (ORANGE LEADS)
RATED AT 25 AMPS, 240VAC, 240°C
- 4 OVER TEMP T.C. (+ WHITE, - RED)
SET AT 230°C
- 5 HEATER GUARD AND BOLT OPTIONAL.



0	RELEASED	-	JLC	7/16/03
REV	DESCRIPTION	ECN	BY	CHK
Drawn By	J.L. CLAIR	The:		
Date:		DOUBLE ELEMENT TFB CONNECTION		
Checked By:		AND GENERAL LAYOUT		
Date:		SIZE	Drawing No.	REV
		A		0
				1 OF 1